



L21S/L32S Thermostatic Steam Trap

Features

Thermostatic steam trap suitable for a wide range of applications, including steam mains, tracing, dryers and heaters.

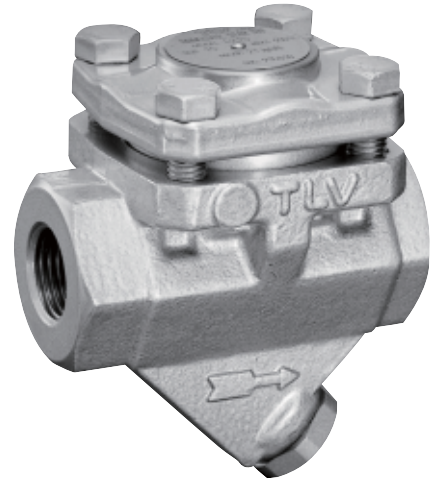
1. "Fail open" feature will not hold back condensate in the steam space.
2. Rugged, yet light construction, withstands superheat and water hammer.
3. Cyclic operation with fixed subcooling throughout the whole pressure range.
4. Outstanding air venting capability.
5. Compact, yet with high capacity.
6. Easy to clean and maintain.
7. Hardened stainless steel valve seat.
8. Built-in screen with large surface area.
9. Models L21SC/L32SC with built-in check valve are available upon request.

Pressure Equipment Directive (PED)

Classification according to PED 2014/68/EU, fluid group 2

Size	Category	CE marking
DN 15 to DN 25	—*	Art. 4, Sec. 3 (sound engineering practice), CE marking not allowed

* Manufactured in accordance with sound engineering practice



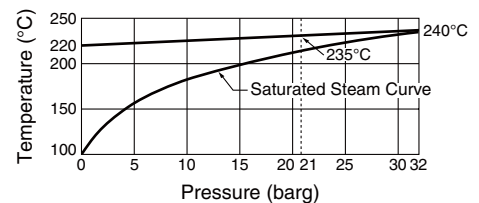
Specifications

Model	L21S				L32S				
	Carbon Steel		Stainless Steel		Carbon Steel		Stainless Steel		
Material	Carbon Steel		Stainless Steel		Carbon Steel		Stainless Steel		
Connection	Screwed	Socket Welded	Flanged	Screwed	Flanged	Screwed	Flanged	Screwed	Flanged
Size	1/2", 3/4", 1"	DN 15, 20, 25		1/2", 3/4", 1"	DN 15, 20, 25		1/2", 3/4", 1"	DN 15, 20, 25	
Max. Operating Pressure (barg) PMO	21				32				
Min. Operating Pressure (barg)					0.1				
Max. Operating Temperature (°C) TMO					see graph below				
Maximum Back Pressure					90% of inlet pressure				
Max. Subcooling of X-element Fill (°C)					up to 6				
Type of X-element					C6				

PRESSURE SHELL DESIGN CONDITIONS (NOT OPERATING CONDITIONS): Maximum Allowable Pressure PMA: 32 barg 1 bar = 0.1 MPa
Maximum Allowable Temperature TMA: 300 °C



To avoid abnormal operation, accidents or serious injury, do not use this product outside of the specification range. Local regulations may restrict the use of this product to below the conditions quoted.

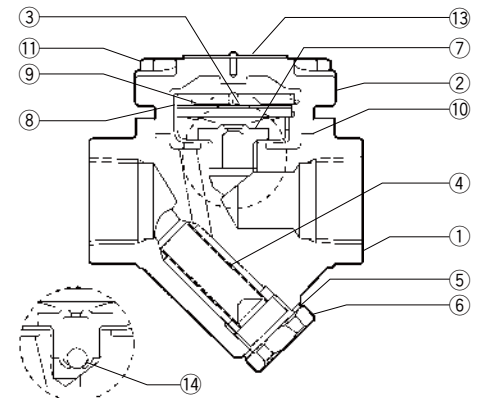


No.	Description	Material	DIN ¹⁾	ASTM/AISI ¹⁾	
①	Body	Carbon Steel	Carbon Steel C22.8	1.0460	A105
		Stainless Steel	Cast Stainless Steel A351 Gr.CF8	1.4312	—
②	Cover	Carbon Steel	Carbon Steel C22.8	1.0460	A105
		Stainless Steel	Cast Stainless Steel A351 Gr.CF8	1.4312	—
③ ^R	X-element	Stainless Steel	—	—	
④ ^R	Screen inside/outside	Stainless Steel SUS304/430	1.4301/1.4016	AISI304/430	
⑤ ^{MR}	Screen Holder	Carbon Steel	Soft Iron SUYP	1.1121	AISI1010
		Stainless Steel	Stainless Steel SUS316	1.4404	AISI316L
⑥	Screen Holder	Carbon Steel	Carbon Steel C22.8	1.0460	A105
		Stainless Steel	Stainless Steel SUS303	1.4305	AISI303
⑦ ^R	Valve Seat	Stainless Steel SUS420F	1.4028	AISI420F	
⑧ ^R	X-element Guide	Stainless Steel SUS304	1.4301	AISI304	
⑨ ^R	Spring Clip	Stainless Steel SUS304	1.4301	AISI304	
⑩ ^{MR}	Cover Gasket	Graphite/Stainl. Steel SUS316L	—/1.4404	—/AISI316L	
⑪	Cover Bolt	Carbon Steel	Carbon Steel S45C	1.0503	AISI1045
		Stainless Steel	Stainless Steel SUS304	1.4301	AISI304
⑫	Nameplate	Stainless Steel SUS304	1.4301	AISI304	
⑬	Flange ²⁾	Carbon Steel	Carbon Steel C22.8/A105 ³⁾ / Cast Steel A216 Gr.WCB ³⁾	1.0460/1.0460/ 1.0619	A105/—/ —
		Stainless Steel	Stainless Steel SUS304/ Cast Stainless Steel A351 Gr.CF8	1.4301/ 1.4312	AISI304/ —
	Flange Pipe (Stainless Steel) ⁴⁾	Stainless Steel SUS304	1.4301	AISI304	
⑭ ^R	Steel Ball (Check Valve)	Stainless Steel SUS440C	1.4125	AISI440C	

¹⁾ Equivalent materials ²⁾ Shown overleaf, shape and material depend on flange specifications

³⁾ For models with ASME flange standards ⁴⁾ Not shown

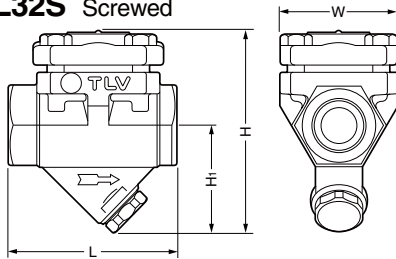
Replacement kits available for carbon steel version: (M) maintenance parts, (R) repair parts



With optional Check Valve, L21SC available screwed and flanged. L32SC available flanged only.

Dimensions

• L21S/L32S Screwed



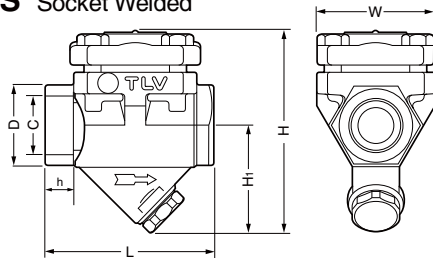
L21S/L32S Screwed* (mm)

Size	L	H	H ₁	W	Weight (kg)
1/2"	80	97	52	56 [62]	1.3
3/4"					
1"	88	104	55		1.8

* BSP DIN 2999, other standards available

[] is for Stainless Steel

• L21S Socket Welded



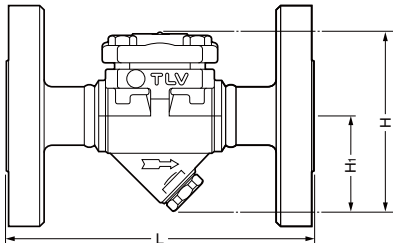
L21S Socket Welded* (mm)

DN	L	H	H ₁	W	φD	φC	h	Weight (kg)
15	80	97	52	56 [62]	30	21.8	12	1.3
20					36	27.2		
25	88	104	55		44	33.9		1.8

* ASME B16.11-2005, other standards available

[] is for Stainless Steel

• L21S/L32S Flanged



L21S/L32S Flanged (mm)

DN	L				H	H ₁	Weight* (kg)
	DIN 2501	ASME Class					
	PN25/40	150RF	300RF	600RF			
15	150	140	140	140	97	52	3.2
20		[160]	[160]	[160]			3.8
25	160	210	210	210	104	55	4.6

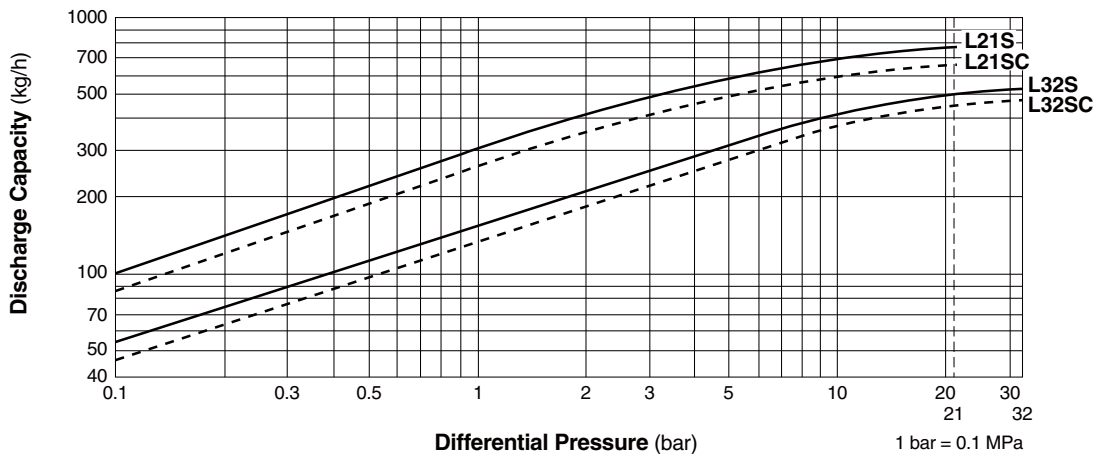
Other standards available, but length and weight may vary

* Weight is for DIN PN 25/40

[] is for Stainless Steel

The models L21SC and L32SC with internal check valves have the same dimensions and weights as models L21S and L32S

Discharge Capacity



1. Pressure differential is the difference between the inlet and outlet pressure of the trap.
2. Recommended safety factor: at least 2.