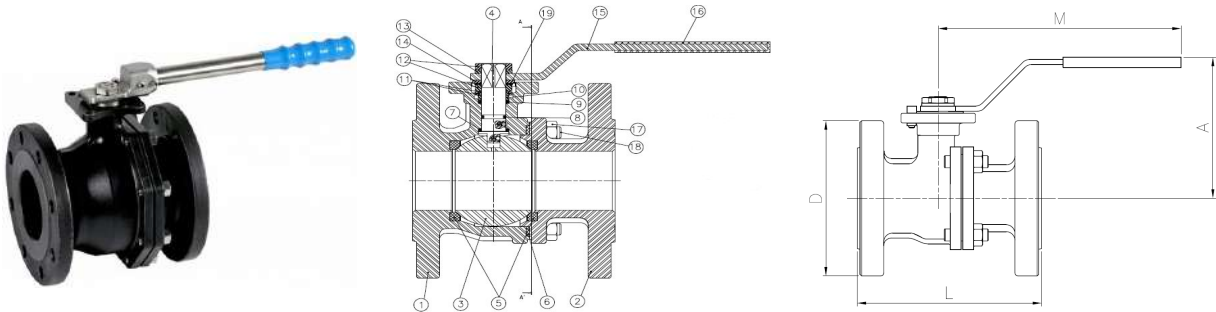


Art2526A Carbon Steel Full Bore Ball Valve (ANSI-150 Flanged)

Features

1. Full port ball valve, 2 pieces.
2. Flanged ends according to ASME B 16.5. ANSI Class 150
3. Made of Carbon Steel WCB.
4. Design according to ASME B 16.34.
5. Face to Face according to ASME B 16.10.
6. Ball seats PTFE + 25 % Graphite.
7. Body gasket:
PTFE + Graphite (from 1/2" to 1 1/4")
AISI 304 + Graphite (from 1 1/2" to 6")
8. Fire-safe design (according to API 607).
9. Blow-out proof stem.
10. Direct mount actuator according to ISO 5211
11. Block System included.
12. Antistatic device.
13. Inspection & Testing: API 598, API 6D.
14. Max. Working pressure 19 Kg/cm².
15. Working Temperature -30 °C + 250 °C.



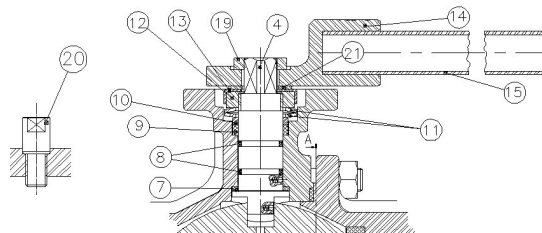
N°	Name	Material	Surface Treatment	Ref
1	Body	Carbon Steel WCB	Phosphatized	
2	Cap	Carbon Steel WCB	Phosphatized	
3*	Ball	Stainless Steel 316		2907
4*	Stem	Stainless Steel 316		2908
5*	Ball Seat	PTFE + Graphite		2909C

N°	Name	Material	Surface Treatment	Ref
6*	Gasket	Stainless Steel 304 + Graphite		2909C
7*	Trust Washer	PTFE + Graphite		2909C
8*	O-Ring	FKM (Viton)		2909C
9*	Stem Packing	PTFE		2909C
10	Stem Ring	Stainless Steel 304		
11	Spring Washer	Stainless Steel 301		
12	Nut	Stainless Steel 304		
13	Washer	Stainless Steel 304		
14	Stopper	Stainless Steel 304		
15	Handle	Stainless Steel 304		
16	Handle Sleeve	Vinyl		
17	Nut	Stainless Steel 304		
18	Stud Bolt	A193 - B8		
19	Lock Washer	Stainless Steel 304		

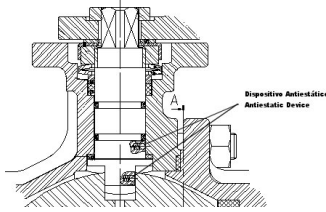
*Repair kit parts

Sizes 2 1/2" - 6" Only

N°	Name	Material	Surface Treatment
14	Body Handle	AISI 304	Shot Blasting + Pickling
19	Nut	AISI 316	
20	Stopper	AISI 304	
21	Washer	AISI 304	

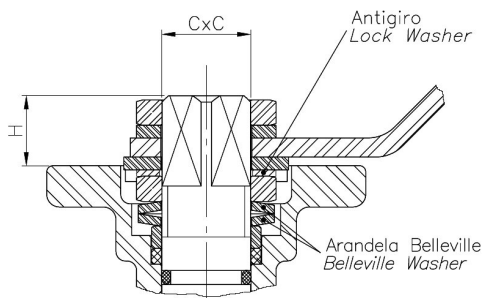


Anti-static Device



This ensures electrical continuity between the body, ball & stem, this is of special need in flammable fluids.

Stem Detail



Lock Washer

Prevents unthreading of stem nut in high cycle automation applications.

Belleville Washers

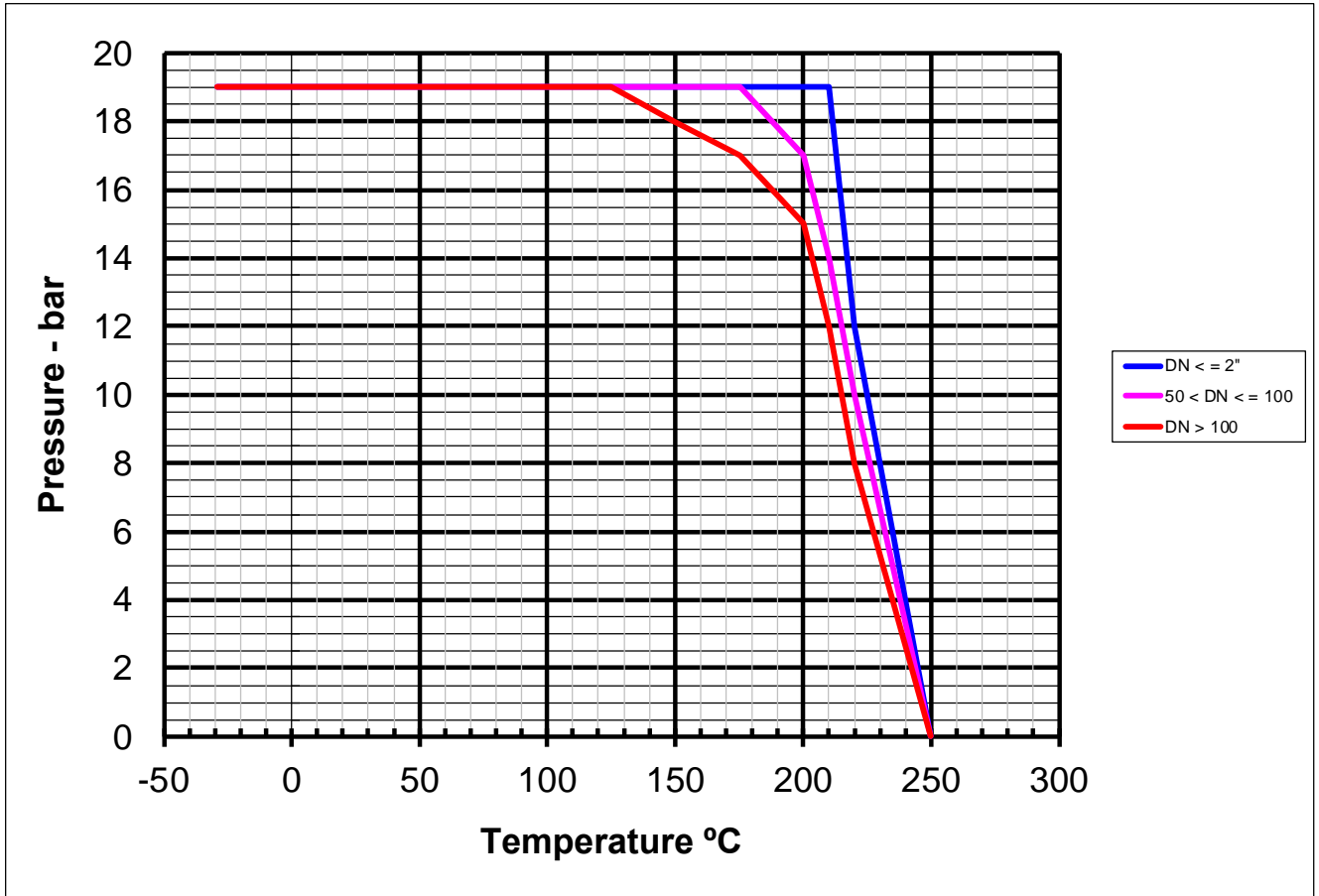
Belleville washers provide constant "live load" on the stem seals, assuring a tight seal even varying service parameters.

General Dimensions

Ref	Size	Class	Dimensions (mm)					ISO 5211	Weight (Kg)
			D	A	L	M	C x C		
2526A 04	1/2"	150	89	90	108	165	9 x 9	F04	1,500
2526A 05	3/4"	150	98.6	95	117	165	9 x 9	F04/F05	2,150
2526A 06	1"	150	108	95	127	165	11 x 11	F04/F05	2,870
2526A 07	1 ¼"	150	117	106	140	165	14 x 14	F05/F07	3,950
2526A 08	1 ½"	150	127	110	165	200	14 x 14	F05/F07	5,800
2526A 09	2"	150	152.5	118	178	200	14 x 14	F05/F07	8,400
2526A 10	2 ½"	150	177.8	160	190	400	17 x 17	F07/F10	13,500
2526A 11	3"	150	190.5	170	203	400	17 x 17	F07/F10	17,800
2526A 12	4"	150	228.6	186	229	400	17 x 17	F07/F10	30,500
2526A 14	6"	150	279,4	280	394	800	27 x 27	F10/F12	58,000



Pressure/Temperature Rating



Kv Values

Kv (m³/h): Water flow rate in cubic meter per hour generating a 1 bar pressure drop across the valve.

1/2"	3/4"	1"	1 1/4"	1 1/2"	2"	2 1/2"	3"	4"	6"
17	38	62	115	150	250	410	900	1450	3700

Head Loss Chart

