

Art4519 5/2 Ways NAMUR Solenoid Valve



Features

- *Design according NAMUR VDI / VDE 3845.*
 - *Universal application 5 / 2 ways.*
 - *Port sizes; pressure in and exhaust 1/4" GAS.*
 - *Single stable version.*
 - *Manual override as standard.*
 - *Standard kit*
- a) *Connector Pg –9 DIN 43650 "B" with light signal.*
- b) *O-Rings and screw for mounting.*

Materials

- *Body in alloy UNI 3717 (ASTM B 240) anodised*
- *Spool and piston in aluminium UNI 6362 (ASTM B 241 – 6063)*
- *Seal in rubber NBR*
- *Spring in stainless steel*
- *Other components in Techno polymer*

Technical Data

Standard voltage =

AC = 24 - 48 - 110 - 220V 50/60 Hz

DC = 12 - 24V

- available spare coils art. 4819 and connector 4801 05.

Voltage	AC-DC	Hz	Consumption	Power
24 V	AC	50	210 mA	5.0 VA
24 V	AC	60	175 mA	4.2 VA
48 V	AC	50	105 mA	5.0 VA
48 V	AC	60	87.5 mA	4.2 VA
110 V	AC	50	45 mA	5.0 VA
110 V	AC	60	37.5 mA	4.2 VA
220 V	AC	50	18 mA	4.0 VA
220 V	AC	60	15 mA	3.4 VA
12 V	DC	---	400 mA	4.8 W
24 V	DC	---	125 mA	3 W

Voltage tolerance = - 15% +10%

Insulation class = "F" (for nylon coil)

Duty cycle = 100% ED

Protection class = IP65 acc. IEC 144 DIN 40050
EN 60529 with connector assembled.

Operating pressure = min. 1,5 bar – máx. 8 bar

Max Pressure = 12 bar

Connector = DIN 43650 "B" with LED illuminating
devices Pg -09

Flow factor Cv = 1.4

Max operating frequency = 300/1'

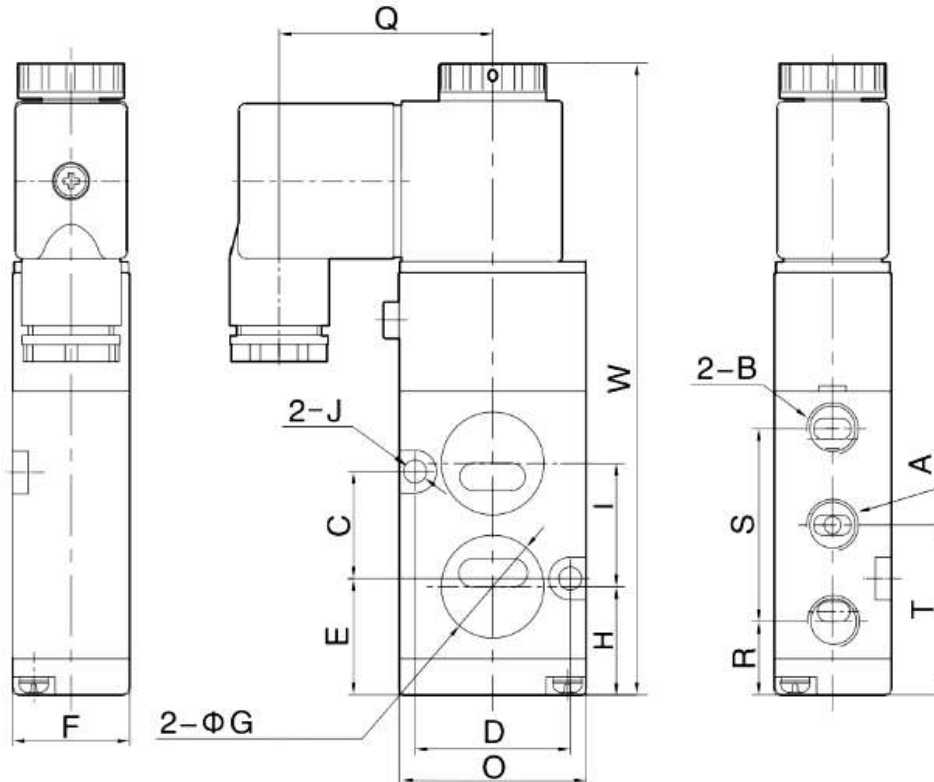
Activate time: < 0,05 s.

Working Temperature: - 5° C + 60° C

Weight = 300 gr.

General Dimensions

Refer.	A	B	C	D	E	F	G	H	I	J	O	Q	R	S	T	W
4519 02	G 1/4"	G 1/4"	24	32	28	27	19.5	28	24	5.2	40	40.5	17.5	45	40	135



Wiring Diagram

