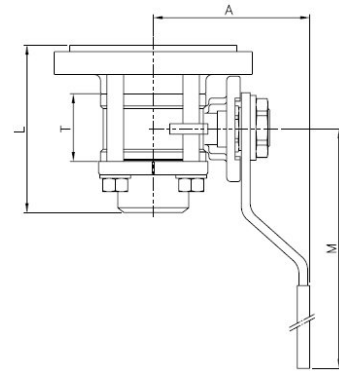
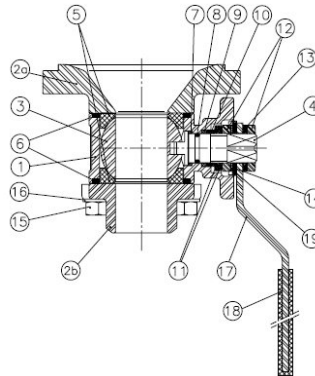


Art2053 Tank Bottom Stainless Steel Ball Valve (Butt Weld)

Features

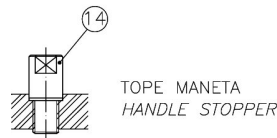
1. Stainless steel full port ball valve, 3 pieces.
2. Ends: Tank bottom / Butt Weld ANSI B 16.25.
3. Made of stainless steel 1.4408 (CF8M) and 316 L.
4. Ball seats PTFE + 15 % G.F.
5. FKM o'ring stem.
6. Stem gasket PTFE + 15 % Graphite.
7. Locking system.
8. Direct mounting actuator ISO 5211.
9. Blow-out proof stem.
10. Max.. Working pressure 63 bar.
11. Working Temperature $-25\text{ }^{\circ}\text{C} + 180\text{ }^{\circ}\text{C}$.



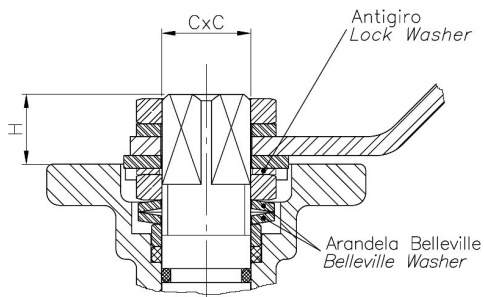
N°	Name	Material	Surface Treatment	Spare Part Code
1	Body	Stainless Steel 1.4408	Shot Blasting	
2a	Tank Bottom Flange	Stainless Steel 316L		
2b	Cap	Stainless Steel 1.4408	Shot Blasting	
3*	Ball	Stainless Steel 1.4408		2907/2904 (4")
4*	Stem	Stainless Steel 316		2905
5*	Ball Seat	PTFE + 15% Graphite		2820
6*	Gasket	PTFE + Graphite		2820
7*	Thrust Washer	PTFE + Graphite		2820
8*	O-Ring	FKM		2820
9*	Stem Packing	PTFE		2820
10	Gland	Stainless Steel 304		
11	Belleville Washer	Stainless Steel 301		
12	Nut	Stainless Steel 304		
13	Washer	Stainless Steel 304		

14	Stopper	Stainless Steel 304		
15	Bolt	Stainless Steel 304		
16	Nut	Stainless Steel 304		
17	Grover Washer	Stainless Steel 304		
18	Handle	Stainless Steel 304		
19	Handle Sleeve	Vinyl		
20	Lock Washer	Stainless Steel 304		

*Repair kit parts



Stem Detail



Lock Washer

Prevents unthreading of stem nut in high cycle automation applications.

Belleville Washers

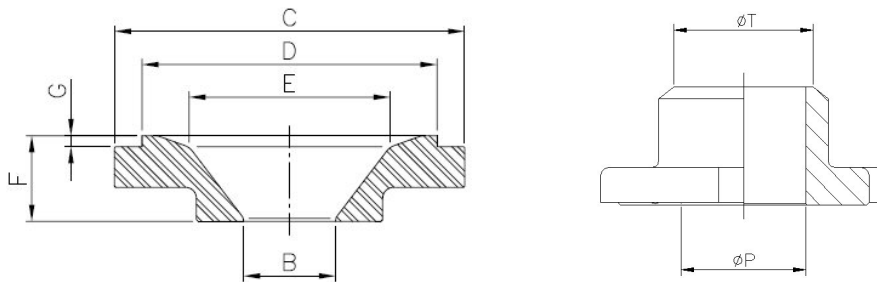
Belleville washers provide constant "live load" on the stem seals, assuring a tight seal even varying service parameters.

General Dimensions

Ref	Size	PN	Bore	Dimensions (mm)			
				A	L	M	T
2053 04	1/2"	63	15	60	65.5	112	24
2053 05	3/4"	63	20	70	76.2	138	30
2053 06	1"	63	25	70	83.3	138	33.5
2053 07	1 1/4"	63	32	88	91.3	160	41.5
2053 08	1 1/2"	63	40	94	103.3	205	51.5
2053 09	2"	63	50	100	116.5	205	63
2053 10	2 1/2"	63	65	150	147.3	330	83.5
2053 11	3"	63	80	165	169	330	100
2053 12	4"	63	100	175	198	340	118.5

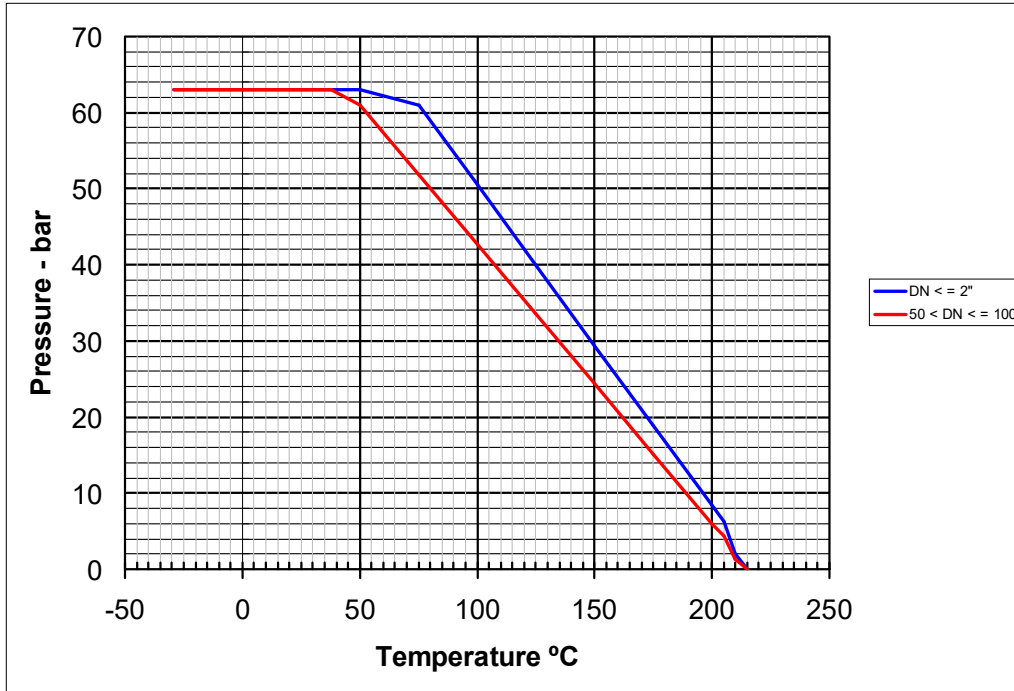
Ref	Size	PN	Dimensions (mm)		
			H	C x C	ISO 5211
2053 04	1/2"	63	11	9 x 9	F-03/F-04
2053 05	3/4"	63	11	11 x 11	F-04/F-05
2053 06	1"	63	11	11 x 11	F-04/F-05
2053 07	1 1/4"	63	15	14 x 14	F-05/F-07
2053 08	1 1/2"	63	15	14 x 14	F-05/F-07
2053 09	2"	63	15	14 x 14	F-05/F-07
2053 10	2 1/2"	63	19	17 x 17	F-07/F-10
2053 11	3"	63	19	17 x 17	F-07/F-10
2053 12	4"	63	19	17 x 17	F-07/F-10

Tank Bottom Flange & Butt Weld End



Ref	Size	Dimensions (mm)						
		B / Ø P	C	D	E	F	G	Ø T
2053 04	1/2"	15	70	60	40	25	3	17
2053 05	3/4"	20	85	75	50	25	3	22
2053 06	1"	25	95	80	55	25	3	28
2053 07	1 1/4"	32	110	90	60	25	3	35
2053 08	1 1/2"	40	130	110	74	25	3	43
2053 09	2"	50	150	140	91	25	3	54
2053 10	2 1/2"	65	185	175	108	28	5	69
2053 11	3"	80	200	185	128	28	5	87
2053 12	4"	100	240	220	150	28	5	105

Pressure/Temperature Rating



Kv Values

Kv: The rate of flow of water in cubic meter per hour that will generate a pressure drop of 1 bar across the valve.

1/2"	3/4"	1"	1 1/4"	1 1/2"	2"	2 1/2"	3"	4"
24	43	83	130	205	340	520	1100	1820