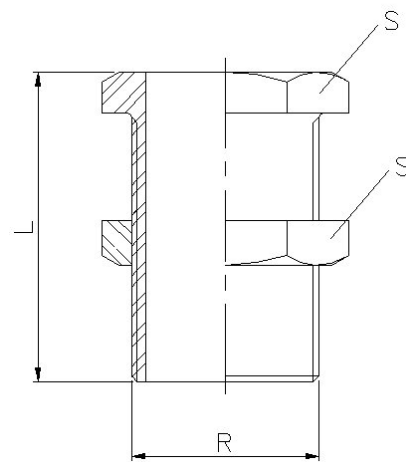


Art0285 Stainless Steel Wall Connector (BSP Threaded)

Features

1. Made of AISI 316 (Casting).
2. Threads according to ISO 228/1.
3. Max. Working pressure 20 bar (S-150).
4. Temperature range -20 °C to 220 °C.



General Dimensions

Ref	Size (R)	Dimensions (mm)	
		L	S
0285 03	3/8"	46	27
0285 04	1/2"	57	32
0285 05	3/4"	57	36
0285 06	1"	69	46
0285 07	1 1/4"	69	55
0285 08	1 1/2"	70	60
0285 09	2"	82	75