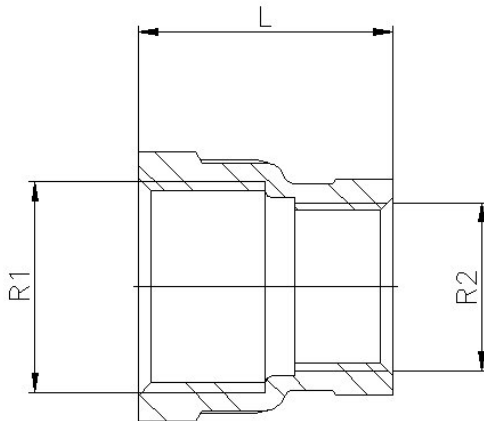


## Art0240 Stainless Steel Reducing Socket (BSP Threaded)

### Features

1. Made of AISI 316 (Casting).
2. Thread according to ISO 7-1 (10226-1) Std.
3. Dimensions according to ISO 4144 Std.
4. Max. Working pressure 20 Bar ( S-150 ).
5. Temperature ratings  $-20\text{ }^{\circ}\text{C}$  to  $220\text{ }^{\circ}\text{C}$ .



### General Dimensions

Ref	Size (R1 x R2)	Dimensions (mm) - L
0240 02 01	1/4" x 1/8"	25
0240 03 02	3/8" x 1/4"	26
0240 04 02	1/2" x 1/4"	34
0240 04 03	1/2" x 3/8"	34
0240 05 04	3/4" x 1/2"	36
0240 06 05	1" x 3/4"	42
0240 07 06	1 1/4" x 1"	48
0240 08 06	1 1/2" x 1"	52
0240 08 07	1 1/2" x 1 1/4"	52
0240 09 08	2" x 1 1/2"	58
0240 10 09	2 1/2" x 2"	65