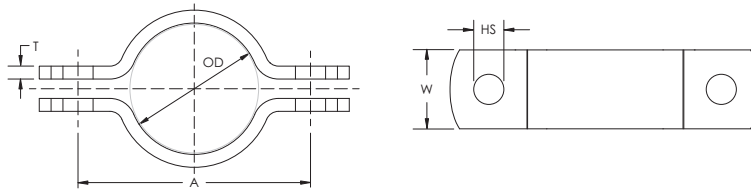


Heavy Duty Pipe Clamp per DIN 3567



- For high static requirements in industrial construction
- Suitable for fix point applications
- Can be welded onto T-beam to form a sliding element



Material: Steel

Part Number	Article Number	Outer Diameter OD	Pipe Size	NB/DN	Hole Size HS	Width W	Thickness T	A
Finish: Plain								
DIN020PL	400148	20.0 mm	-	-	11.5 mm	30 mm	5 mm	56 mm
DIN021PL	400149	21.3 mm	1/2"	15	11.5 mm	30 mm	5 mm	58 mm
DIN025PL	400150	25.0 mm	-	-	11.5 mm	30 mm	5 mm	62 mm
DIN027PL	400151	26.9 mm	3/4"	20	11.5 mm	30 mm	5 mm	64 mm
DIN030PL	400152	30.0 mm	-	-	11.5 mm	30 mm	5 mm	68 mm
DIN034PL	400153	33.7 mm	1"	25	11.5 mm	30 mm	5 mm	72 mm
DIN038PL	400154	38.0 mm	-	-	11.5 mm	30 mm	5 mm	76 mm
DIN042PL	400155	42.4 mm	1 1/4"	32	11.5 mm	30 mm	5 mm	82 mm
DIN044PL	400156	44.5 mm	-	-	11.5 mm	30 mm	5 mm	84 mm
DIN048PL	400157	48.3 mm	1 1/2"	40	11.5 mm	30 mm	5 mm	88 mm
DIN054PL	400158	54.0 mm	-	-	14.0 mm	40 mm	6 mm	102 mm
DIN057PL	400159	57.0 mm	-	-	14.0 mm	40 mm	6 mm	104 mm
DIN060PL	400160	60.3 mm	2"	50	14.0 mm	40 mm	6 mm	108 mm
DIN070PL	400161	70.0 mm	-	-	14.0 mm	40 mm	6 mm	122 mm
DIN076PL	400162	76.1 mm	2 1/2"	65	14.0 mm	40 mm	6 mm	122 mm
DIN082PL	400163	82.0 mm	-	-	14.0 mm	40 mm	6 mm	130 mm
DIN089PL	400164	88.9 mm	3"	80	14.0 mm	40 mm	6 mm	136 mm
DIN095PL	400165	95.0 mm	-	-	14.0 mm	40 mm	6 mm	142 mm
DIN102PL	400166	102.0 mm	3 1/2"	90	18.0 mm	50 mm	8 mm	166 mm
DIN108PL	400167	108.0 mm	-	-	18.0 mm	50 mm	8 mm	172 mm
DIN114PL	400168	114.3 mm	4"	100	18.0 mm	50 mm	8 mm	178 mm
DIN121PL	400169	121.0 mm	-	-	18.0 mm	50 mm	8 mm	186 mm
DIN133PL	400170	133.0 mm	-	-	18.0 mm	50 mm	8 mm	196 mm
DIN140PL	400171	139.7 mm	5"	125	18.0 mm	50 mm	8 mm	204 mm
DIN154PL	400172	154.0 mm	-	-	18.0 mm	50 mm	8 mm	218 mm

Part Number	Article Number	Outer Diameter OD	Pipe Size	NB/DN	Hole Size HS	Width W	Thickness T	A
DIN159PL	400173	159.0 mm	-	-	18.0 mm	50 mm	8 mm	222 mm
DIN168PL	400174	168.3 mm	6"	150	18.0 mm	50 mm	8 mm	232 mm
DIN180PL	400175	180.0 mm	-	-	18.0 mm	50 mm	8 mm	240 mm
DIN194PL	400176	194.0 mm	-	-	18.0 mm	50 mm	8 mm	258 mm
DIN219PL	400177	219.1 mm	8"	200	18.0 mm	50 mm	8 mm	284 mm
DIN225PL	400178	225.0 mm	-	-	18.0 mm	50 mm	8 mm	290 mm
DIN245PL	400179	245.0 mm	-	-	23.0 mm	60 mm	8 mm	310 mm
DIN267PL	400180	267.0 mm	-	-	23.0 mm	60 mm	8 mm	342 mm
DIN273PL	400181	273.0 mm	10"	250	23.0 mm	60 mm	8 mm	348 mm
DIN280PL	400182	280.0 mm	-	-	23.0 mm	60 mm	8 mm	356 mm
DIN299PL	400183	299.0 mm	-	-	23.0 mm	60 mm	8 mm	374 mm
DIN315PL	400184	315.0 mm	-	-	23.0 mm	60 mm	8 mm	388 mm
DIN323PL	400185	323.9 mm	12"	300	23.0 mm	60 mm	8 mm	398 mm
DIN355PL	400186	355.6 mm	14"	350	23.0 mm	60 mm	8 mm	432 mm
DIN368PL	400187	368.3 mm	-	-	23.0 mm	60 mm	8 mm	444 mm
DIN406PL	400188	406.4 mm	16"	400	27.0 mm	70 mm	10 mm	498 mm
DIN419PL	400189	419.0 mm	-	-	27.0 mm	70 mm	10 mm	510 mm
DIN457PL	400190	457.0 mm	18"	450	27.0 mm	70 mm	10 mm	548 mm
DIN508PL	400191	508.0 mm	20"	500	27.0 mm	70 mm	10 mm	600 mm
DIN521PL	400192	521.0 mm	-	-	27.0 mm	70 mm	10 mm	614 mm
DIN610PL	400193	610.0 mm	24"	600	27.0 mm	70 mm	10 mm	710 mm
DIN711PL	400194	711.0 mm	-	-	27.0 mm	70 mm	10 mm	812 mm
DIN812PL	400195	812.0 mm	-	-	27.0 mm	70 mm	10 mm	913 mm